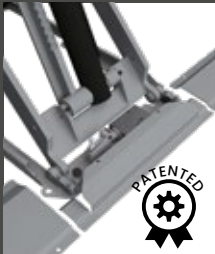




**HINGE PINS WITH SELF-LUBRICATING** bush that do not require maintenance.



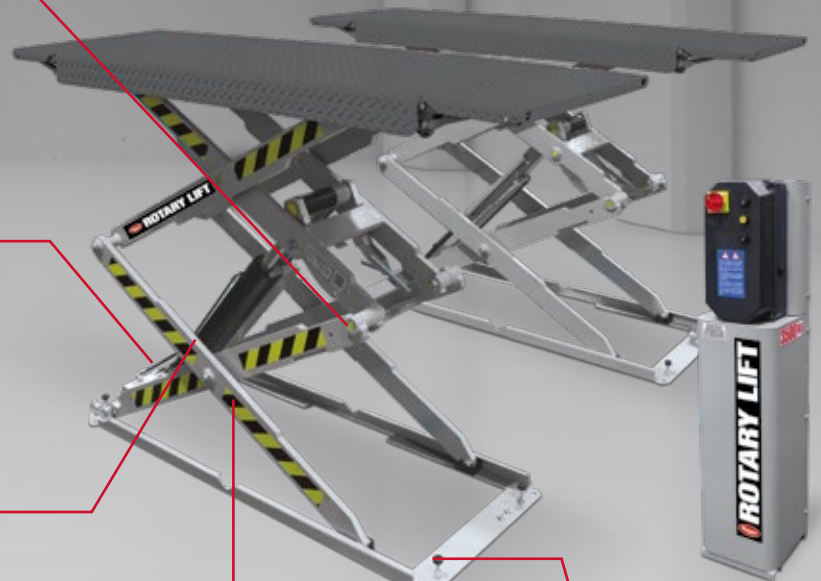
The hydraulic synchronization of the platform movements is independent of the load distribution, **WITH A PATENTED SELF-ADJUSTING DEVICE.**



**MECHANICAL SAFETY DEVICE WITH AUTOMATIC ENGAGEMENT AND PNEUMATIC DIS-ENGAGEMENT**, which prevents accidental lowering of the load, ensuring maximum safety during parking.

Slowed platform movement speed during initial lifting and lowering phases.

No mechanical connections between the platforms (maximum operability in the work area).

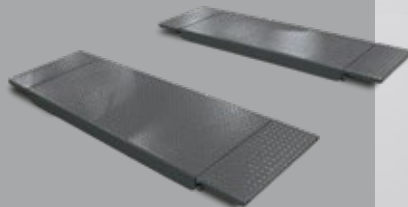


High-strength steel connecting rods.

Adjustable mechanical limit switches.

### RECESSED VERSION.

The low profile platforms allow for recessed installations even where it would not be possible to create pits of the usual depth for this type of lift.



**ACOUSTIC SIGNALING** during final lowering.

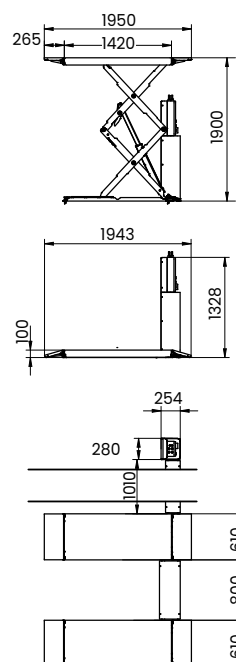


**DOUBLE SCISSOR LIFTS  
ELECTRO-HYDRAULIC**

**DF35  
DF30**

## TECHNICAL DATA

	DF35CAT- DF35HG	DF30CAT
<b>Capacity</b>	3500 kg	3000 kg
<b>Max. lifting height</b>	1900 mm	1900 mm
<b>Lifting time</b>	37 s	32 s
<b>Lowering time</b>	40 s	34 s
<b>Drive-on-height</b>	100 mm	100 mm
<b>Length of platforms</b>	1943 mm	1943 mm
<b>Width of platforms</b>	610 mm	610 mm
<b>Height of platforms</b>	100 mm	100 mm
<b>Space of platforms</b>	800 mm	800 mm
<b>Driving power</b>	1x2.6 Kw	1x2.6 Kw
<b>Noise level</b>	≤70 dB(A)	≤70 dB(A)
<b>Length</b>	1950 mm	1950 mm
<b>Width</b>	2020 mm	2020 mm
<b>Height</b>	1900 mm	1900 mm
<b>Weight</b>	625 kg	600 kg



CONFIGURATIONS	DF35CAT	DF35HG	DF30CAT
	<b>ROT.DF35C.196286</b>	<b>ROT.DF35H.196293</b>	<b>ROT.DF30C.196149</b>
Power Supply	230/400 V   3Ph   50 Hz	230/400 V   3Ph   50 Hz	230/400 V   3Ph   50 Hz
Galvanizing		total	

## ACCESSORIES



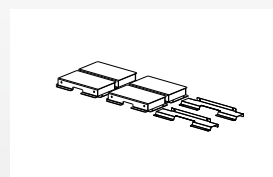
**S505A2**  
2 traverse beams for vans and off-road vehicles.



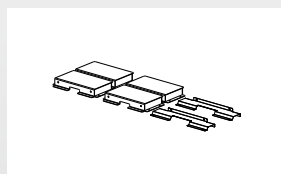
**S518A20**  
Hose cover for surface installation - length 1 meter.



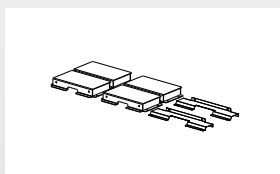
**S540A1**  
Kit with additional run up ramps for low ground clearance vehicles.



**S518A21**  
Recessed installation kit.



**S535A1**  
Recessed installation kit.



**S540A2**  
Recessed installation kit.

Technical changes reserved. Data are considered advertisement.



GERMANY **BlitzRotary GmbH** Hüfingstraße 55 | 78199 Bräunlingen | +49 771 9233 0  
 ITALY **Vehicle Service Group Italy S.r.l.** Via F. Brunelleschi 9 | 44020 Ostellato FE | +39 051 6781511  
 FRANCE **RAV France SARL** 4, Rue De Longue Raie, ZAC de la Tremblaie | 91220 Le Plessis Pâté | +33 1 60 86 88 16  
 UK **Vehicle Service Group UK Ltd** 3 Fourth Avenue, Bluebridge Industrial EST | Halstead, Essex, CO9 2SY | +44 1787 477711

a **DOVER** company

✉ [info.emea@rotarysolutions.com](mailto:info.emea@rotarysolutions.com)

🌐 [ROTARYsolutions.eu](http://ROTARYsolutions.eu)