

THE WAY TO THE FUTURE

TOMORROW SERIES

Revised technology shaping a modern design. The 2-post lifts of the **Tomorrow Series** of Rotary raise your workshop immediately into the future. Tested for 20000 cycles and designed for TEq-Link online internet connection, your workshop is prepared for all innovations that are yet to come.

- + **RELIABLE & POWERFUL:** solid performance even under demanding conditions
- + **FLEXIBLE & VERSATILE:** three possible installation widths to satisfy any workshop needs and applicable to a wide range of different vehicles
- + **MODERN & PREMIUM:** a contemporary look meets the premium quality of components

SPMA42-XE

The arms geometry is designed to lift cars, commercial vehicles and long-wheelbase vans. Asymmetrical arm configuration (two long and two short arms).

SPM42-XL

Symmetrical arm configuration (four long arms). Designed for lifting long-wheelbase vans.

Capacity

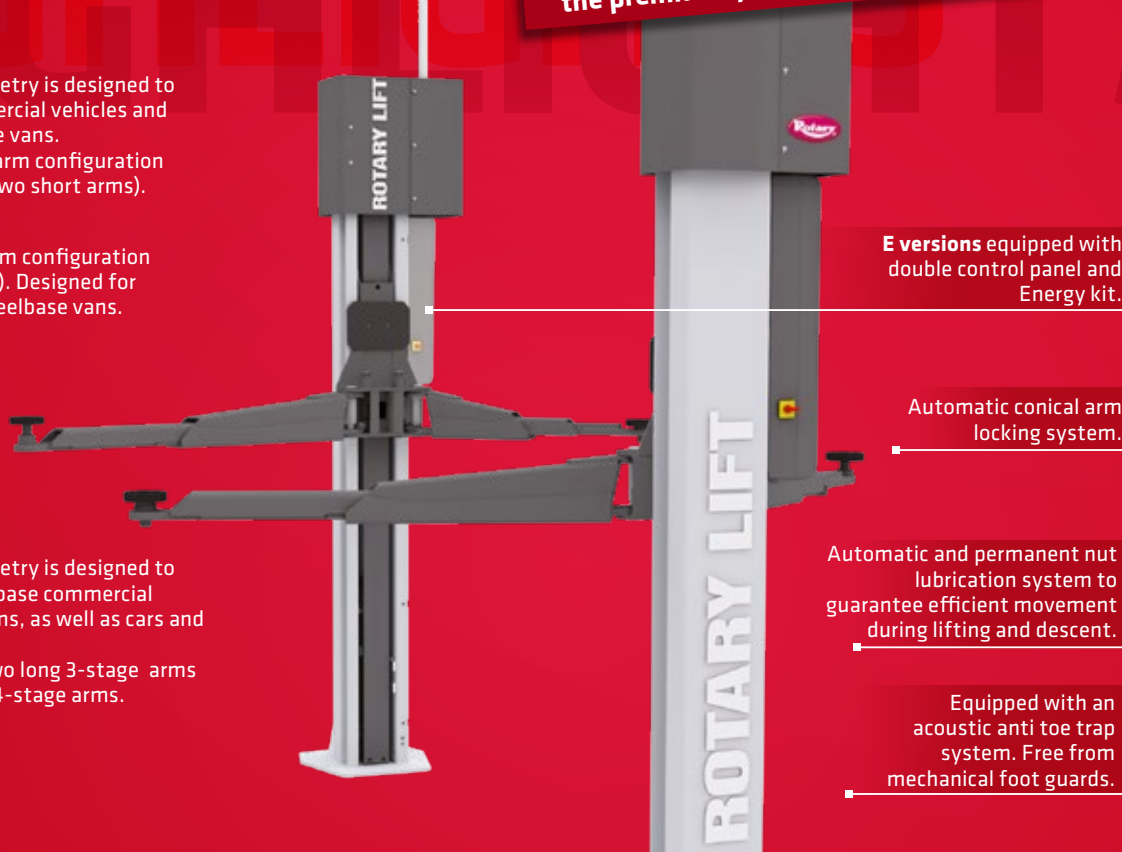
4.2 t

SPM55-XEL

The arms geometry is designed to lift long-wheelbase commercial vehicles and vans, as well as cars and armoured cars. Version with two long 3-stage arms and two short 4-stage arms.

Capacity

5.5 t



E versions equipped with double control panel and Energy kit.

Automatic conical arm locking system.

Automatic and permanent nut lubrication system to guarantee efficient movement during lifting and descent.

Equipped with an acoustic anti toe trap system. Free from mechanical foot guards.

DETAILS



- 1** Possibility to install without gantry since cables can be placed inground.
- 2** Steel high resistance rolled screw to provide long life.
- 3** Energy kit on selected models.
- 4** High efficiency motors.
- 5** Premium quality of components.
 - + Aluminium pulley with cooling function.
 - + Long lasting bearings.
 - + 50% longer bronze load nut.
 - + Motors with reinforced and cooling casing.
 - + Solid automatic arm locking.



UP/DOWN

Push buttons control (up/down) at an ergonomic height.



SMART AND FLEXIBLE INSTALLATION

Up to 20% improvement in installation time. The electronic synchronization avoids the installation and adjustment of the re-alignment cable. The lifts can be installed in a flexible way thanks to three widthadjustable positions.



TOMORROW SERIES



MORE SPACE FOR MOVEMENT AROUND THE VEHICLE

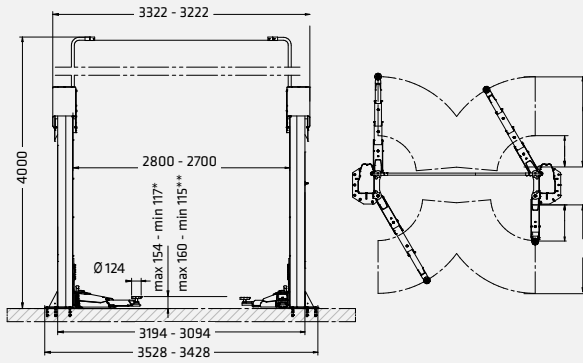
The lift is designed to maximise its layout while ensuring minimum space requirements.



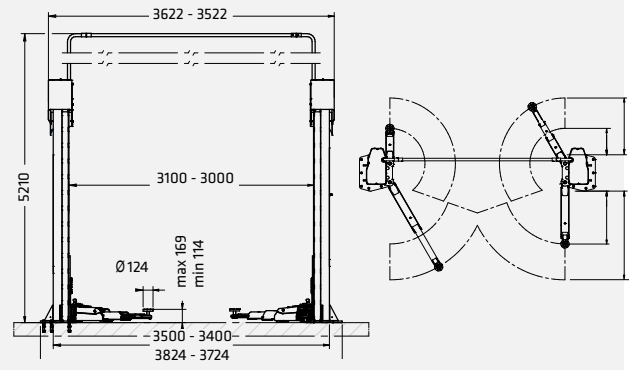
HEIGHT OF THE PADS

Minimum height of the pads suitable for loading, of armoured cars as well.

SPMA42-XE - SPM42-XL



SPM55-XEL



* SPMA42-XE
** SPM42-XL

Model	SPMA42-XE	SPM42-XL	SPM55-XEL
Capacity	4200 kg	4200 kg	5500 kg
Max. lifting height	2042 mm	2042 mm	2052 mm
Lifting time	58 s	58 s	58 s
Min. pad height	117 mm	115 mm	114 mm
Max. pad height	153 mm	156 mm	169 mm
Column height	2860 mm	2860 mm	3080 mm
Drive-through width	2504 mm	2504 mm	2762 mm
Min. ceiling height	4100 mm	4100 mm	5300 mm
Arm layout	asymmetric	symmetric	asymmetric
Min. front arm length	525 mm	705 mm	705 mm
Max. front arm length	981 mm	1330 mm	1790 mm
Min. rear arm length	922 mm	705 mm	822 mm
Max. rear arm length	1460 mm	1330 mm	1791 mm
Driving power	2x3.5 kW	2x3.5 kW	2x3.5 kW
Width	3428-3528 mm	3428-3528 mm	3724-3824 mm
Height	4000 mm	4000 mm	5210 mm

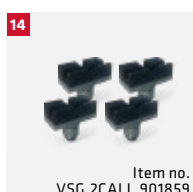
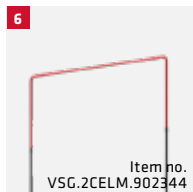
	Item no.	Double control panel + Energy kit
SPMA42-XE	ROT.SP42X.199096	✓
SPM42-XL	ROT.SP42X.198877	
SPM42-XEL	ROT.SP42X.198761	✓
SPM55-XEL	ROT.SP55X.198839	✓



All models of this series are equipped with up/down buttons and TEq-Link connectivity.



ACCESSORIES



- 1** Kit containing 8 spacers for pads. 4 spacers x H 89 mm + 4 spacers x H 127 mm, 2 spacer support brackets.
- 2** Kit containing 4 spacers for pads. 4 spacers x H 200 mm, 2 spacer support brackets.
- 3** Kit with frame adapters. 1 set with 4 pieces.
- 4** Kit with U-shaped pads. 1 set with 4 pads.
- 5** Kit with pads for TESLA vehicles. 1 set with 4 pads.
- 6** Kit for increasing overhead cable passage height. Up to + 1.5 m.
- 7** Eyebolt for handling columns (3.2 t - 3.5 t - 4.2 t). It facilitates installation of the lift, can be used again for other installations.
- 8** Inground cable connection kit. Allows columns connection cables to be placed inground, eliminating the overhead connecting pipes and height restrictions. Ideal for workshops with low ceilings.
- 9** Eyebolt for column handling (5.5 t). It facilitates the handling and installation of the lift, reusable for multiple installations.
- 10** Outrigger plates kit. Set of 2 plates, allowing installation on floors with poor capacity or lower concrete thickness.
- 11** Vehicles lift platforms kit. 1 set with 4 ramps, ramp height 60 mm.
- 12** Kit of stands for alignment. 1 set with 4 stands.
- 13** Magnetic tray. 1 set with 2 trays.
- 14** Mercedes G class support pads kit. 1 set of 4 pads.
- 15** Sprinter/crafter support pads kit. 1 set with 6 pads, for Mercedes Sprinter and Volkswagen Crafter old and new series.
- 16** Ducato/boxer/jumper support pads kit. 1 set of 4 pads, 2 front and 2 rear.
- 17** Outrigger plates kit (3.2 t). Set of 2 plates, allowing installation on floors with poor capacity or lower concrete thickness.
- 18** Arm extension kit for arms. (for XL/EXL models only). 1 pair, load capacity reduced to 3500 kg.
- 19** Holder for impact wrench. Ergonomic tool support.